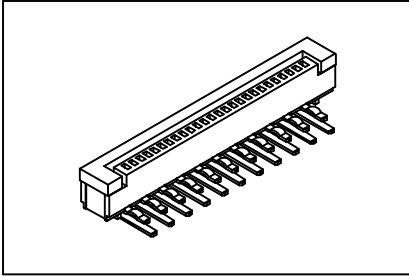


FFC/FPC Connector 1.0mm(0.039") ZIF Type

GXCON



Material:

Housing: High temperature housing UL94V-0 withstands IR and VPR soldering methods.

Contacts: Phosphor Bronze.

Leg: Brass.

Plating: Tin plated.

Electrical Characteristics:

Current Rating: 0.5 AMP.

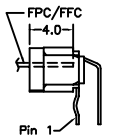
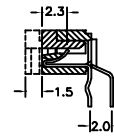
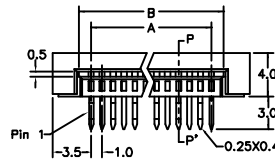
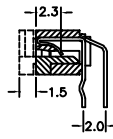
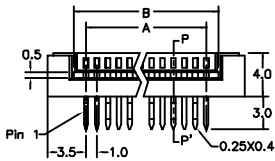
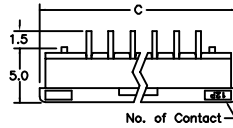
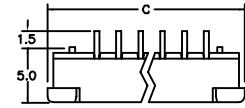
Insulator Resistance: 100MΩmin. at DC 500V.

Contact Resistance: 20mΩmax. at DC 100mA.

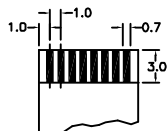
Operating Temperature: -55°C ~ +85°C.

Features:

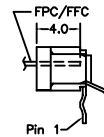
- * ZIF, Right angle dip type.
- * Size 4 through 32 available.
- * For 0.30mm(0.0118") thick FFC/FPC.



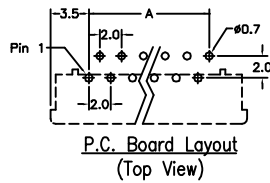
Top Contact
Section P-P'



FFC/FPC Dimension
Thickness 0.3±0.05mm



Bottom Contact
Section P-P'



P.C. Board Layout
(Top View)

Position Dimension	4 Thru 32
A	(No. of Positions X 1.0)-1.0
B	(No. of Positions X 1.0)+1.2
C	(No. of Positions X 1.0)+6.0

Ordering information

FC13- 32 2 2 1
 Series No. of Pin Count 2: Tin Plated 2: Right Angle 1: Top Contact 2: Bottom Contact